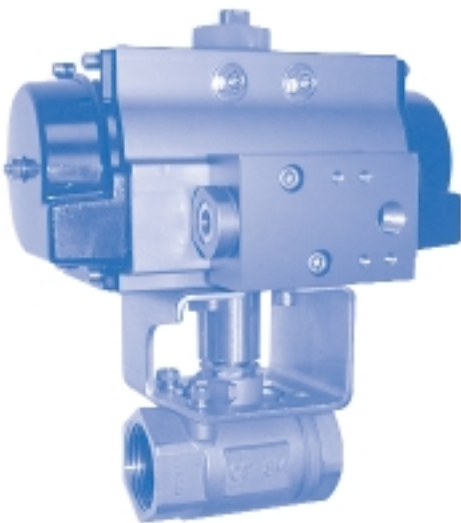
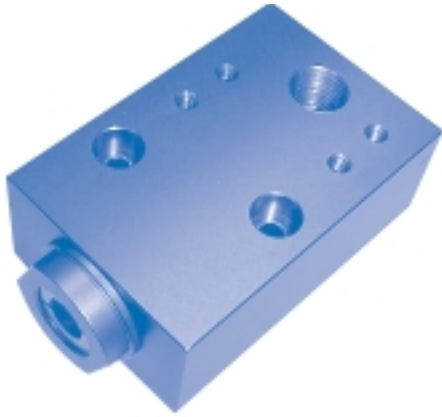


FUNCTION / OPERATION



The Quadrant C-SR-BBLOCK Breather Block Assembly is designed to be installed between air supply or solenoid valve and Spring-Return pneumatic actuator's inlet port (Port "A").

When installed, the Quadrant Breather Block insures that during the "Spring Stroke" of actuator, when solenoid is de-energized or when air supply to actuator is removed, no atmospheric/ambient air or gases from the area surrounding the actuator are allowed to be drawn into the chambers between actuator end caps and pistons due to vacuum created by piston movement.

Without the Quadrant Breather Block, every time the spring stroke occurs, atmospheric air/gas from the area immediately around actuator enters actuator piston and cylinder bore area, causing corrosion and accelerated wear.

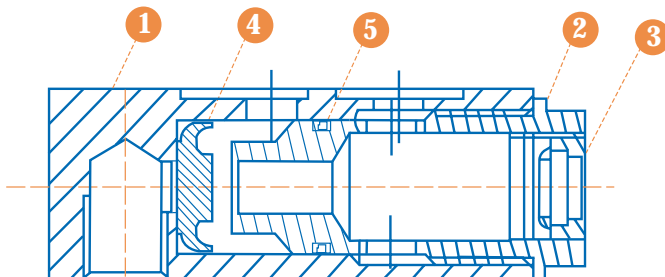
With the Quadrant Breather Block installed, only instrument air (compressed air used to operate actuator) enters the actuator internals.

All aluminum parts are hard-anodized for corrosion resistance.

MATERIALS OF CONSTRUCTION

| PART | DESCRIPTION | STANDARD MATERIAL |
|------|-----------------|-----------------------------------|
| 1 | BODY | Grade 6061 Aluminum |
| 2 | CYLINDER | Grade 6061 Aluminum |
| 3 | FILTER ASSEMBLY | Brass with Sintered Bronze Filter |
| 4 | SHUTTLE SEAL | Buna-N or Viton |
| 5 | O-RING | Buna-N or Viton |

Note: Uses Standard #2-017 O-Rings between Breather Block and Actuator





SERIES C-SR-BBLOCK

NUMBERING SYSTEM ... HOW TO ORDER:

C-SR-BBLOCK-B

SEALS

B = Buna-N

F = Viton

OTHER QUADRANT PRODUCTS ... to solve your Fluid Control Problems:

| | |
|-------------------------------------|--|
| <u>SERIES 20-NP</u> | Forged Brass 400WOG Reduced Port Ball Valves |
| <u>SERIES 20-BP & BS</u> | Cast Bronze 600WOG Full & Reduced Port Ball Valves with Brass or 316SS Trim |
| <u>SERIES 20-CC & CS</u> | Carbon Steel Bar Stock 2000WOG Reduced Port Ball Valves with Carbon or 316SS Trim |
| <u>SERIES 21</u> | Stainless Steel 2-Piece 1000WOG Full Port Ball Valves |
| <u>SERIES S1</u> | Seal Welded Stainless Steel 1000WOG Full Port Ball Valves |
| <u>SERIES S2</u> | Seal Welded Stainless Steel 2000WOG Reduced Port Ball Valves |
| <u>SERIES SB</u> | Seal Welded Stainless Steel 2160WOG Reduced Port Ball Valves |
| <u>SERIES S3</u> | Seal Welded Stainless Steel 3600WOG Reduced Port and Full Port Ball Valves |
| <u>SERIES S5</u> | Seal Welded Stainless Steel 5000WOG Reduced and Full Port Ball Valves |
| <u>SERIES S6</u> | Seal Welded Stainless Steel 6000WOG Reduced Port and Full Port Ball Valves with FNPT, MxF NPT & Socket Weld Ends |
| <u>SERIES M1</u> | 3-Piece 4-Bolt Maintenance Design Brass 600WOG Full Port Ball Valves with Plated Brass or 316SS Trim |
| <u>SERIES UU</u> | 3-Piece Double Union High Pressure Full Port Ball Valves in Carbon and Stainless Steel Construction with FNPT or Socket Weld Ends |
| <u>SERIES BFV-D</u> | 2" - 48" Ductile Iron Butterfly Valves with Ductile, Aluminum Bronze, or CF8M Discs and Buna-N, EPDM or Viton Seats- Lever, Gear Operators or Pneumatic/Electric Actuators |
| <u>SERIES BFV-A</u> | 2" - 12" A-395 Ductile Iron Butterfly, Split Shaft, all Disc Materials and Buna-N or Viton Seats, NACE Compliant, Lever, Gear Operators or Electric/Pneumatic Actuators |