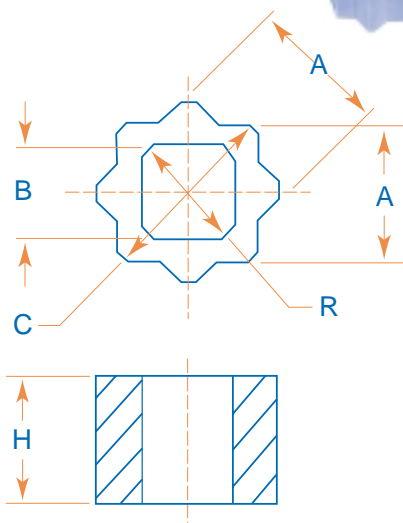
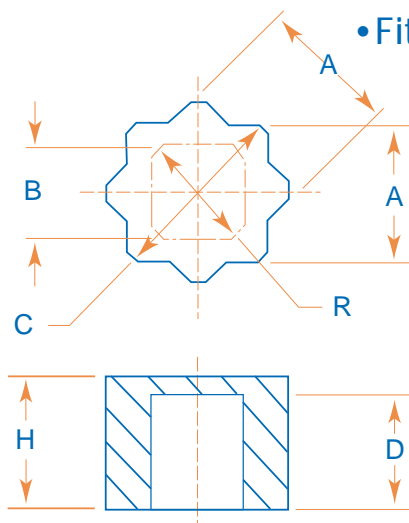


FEATURES

- Reduce Actuator's ISO Output Shaft Broached Square Drive to Smaller ISO Square Stems
- Iron-Based Powdered Metal Construction for High Strength
- Fit all Quadrant Pneumatic and Electric Actuators
- Fit all Quadrant ISO Pattern Ball & Butterfly Valves
- Fit Quadrant Gear Operators



11M9 to 22M19
DESIGN



27M14 to 36M27
DESIGN

DOUBLE-SQUARE INSERT DIMENSIONS

INSERT	A	B	C	D	H	R
11M9	10.95/10.90	9.05/9.10	15.0/14.9	N/A	17.0	12.5
14M9	13.95/13.90	9.05/9.10	19.1/19.0	N/A	20.0	12.5
14M11	13.95/13.90	11.05/11.10	19.1/19.0	N/A	20.0	14.5
17M9	16.95/16.90	9.05/9.10	23.1/23.0	N/A	24.0	12.5
17M11	16.95/16.90	11.05/11.10	23.1/23.0	N/A	24.0	14.5
17M14	16.95/16.90	14.05/14.10	23.1/23.0	N/A	24.0	19.2
22M11	21.95/21.90	11.05/11.10	29.6/29.5	N/A	30.0	14.5
22M14	21.95/21.90	14.05/14.10	29.6/29.5	N/A	30.0	19.2
22M17	21.95/21.90	17.05/17.10	29.6/29.5	N/A	30.0	23.3
22M19	21.95/21.90	19.05/19.10	29.6/29.5	N/A	30.0	25.8
27M14	26.95/26.90	14.05/14.10	36.0/35.9	27.0	29.0	19.2
27M17	26.95/26.90	17.05/17.10	36.0/35.9	27.0	29.0	23.3
27M22	26.95/26.90	22.05/22.10	36.0/35.9	27.0	29.0	30.0
36M19	35.95/35.90	19.05/19.10	48.0/47.9	33.0	35.0	25.8
36M27	35.95/35.90	27.05/27.10	48.0/47.9	33.0	35.0	37.0

NUMBERING SYSTEM ... HOW TO ORDER:

22 M 17 BFV DRIVER

OUTSIDE DOUBLE SQUARE

11 = 11MM
 14 = 14MM
 17 = 17MM
 22 = 22MM
 27 = 27MM
 36 = 36MM

INSIDE SQUARE

9 = 9MM
 11 = 11MM
 17 = 17MM
 19 = 19MM
 22 = 22MM
 27 = 27MM

METRIC DOUBLE-SQUARE INSERT WHERE-USED TABLE

INSERT/DRIVER NUMBER	FITS QUADRANT C-SERIES PNEUMATIC ACTUATORS:	FITS QUADRANT E-SERIES ELECTRIC ACTUATORS:	FITS QUADRANT G-SERIES GEAR OPERATORS:	FITS QUADRANT BFV SERIES BUTTERFLY VALVES:
11M9	C-250DA & C250SR	NONE	NONE	N/A
14M9	C-450DA & C-450SR	E-3-0, E-4.3, E-13.0, E-13.0A	NONE	N/A
14M11	C-450DA & C-450SR	E-3-0, E-4.3, E-13.0, E-13.0A	NONE	2", 2-1/2", 3" & 4"
17M9	C-1000DA & C-1000SR	E-19.0	GO-30 with GO-30-17MMSQ	N/A
17M11	C-1000DA & C-1000SR	E-19.0	GO-30 with GO-30-17MMSQ	2", 2-1/2", 3" & 4"
17M14	C-1000DA & C-1000SR	E-19.0	GO-30 with GO-30-17MMSQ	5" & 6"
22M11	C-2250DA & C-2250SR	NONE	GO-50 with GO-50-22MMSQ	2", 2-1/2", 3" & 4"
22M14	C-2250DA & C-2250SR	NONE	GO-50 with GO-50-22MMSQ	5" & 6"
22M17	C-2250DA & C-2250SR	NONE	GO-50 with GO-50-22MMSQ	N/A
22M19	C-2250DA & C-2250SR	NONE	GO-50 with GO-50-22MMSQ	8"
27M14	C-3650DA & SR, C-5000DA & SR	NONE	GO-50 with GO50-27MMSQ	5" & 6"
27M17	C-3650DA & SR, C-5000DA & SR	NONE	& GO-80 with GO80-27MMSQ	N/A
27M22	C-3650DA & SR, C-5000DA & SR	NONE	*****	10"
36M19	C-11000DA & C-11000SR	NONE	NONE	8"
36M27	C-11000DA & C-11000SR	NONE	NONE	12" & 14"

