

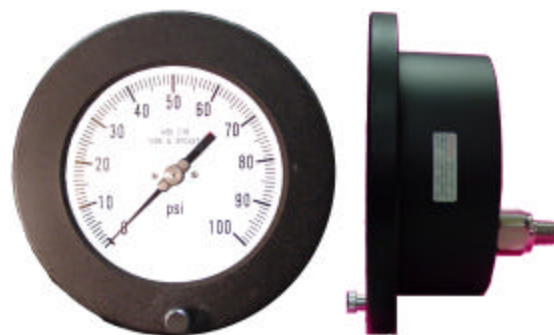
PRECISION INSTRUMENT COMPANY

Solid Front Process Gauge with Aluminum Case Type: 4504, 6504

The Precision Instrument Corporation model 4504 and 6504 is a solid front process gauge with an aluminum front flange safety case with a black enamel finish. The aluminum black wrinkle enamel coated ring makes these gauges well suited for panel board applications. The front screw lets users open the window and permits easy panel installation. There is a solid wall between the pressure sensing unit and the window, which provides greater safety for personnel monitoring the gauges.

The bourdon tube with socket may be selected in brass, stainless steel or monel material. If choose, for example, stainless steel, then all the internal parts such as bourdon tube, socket, movement, screws, washers, etc. will be stainless steel. The stainless steel sensing element is suitable use in corrosive media and the pressure system is not subject to damage.

Precision Instrument Corporation gauge models 4504 and 6504 are supplied as dry only and available dial sizes are 4 1/2" or 6". The 4 1/2" dial is the standard gauge size. The 6" dial size is used where distance is a factor allowing viewing from a greater distance.



SPECIFICATIONS

- Solid front with pressure relief opening to ASME B40.1 standard that will protect users from fluid and particle in the event of failure and particle in the event of failure.
- The aluminum case with black wrinkle ring can resist rugged and high temperature environment.
- The stainless steel rotary geared movement reduces friction and corrosion which assures smooth-moving pointer and accurate pressure indication.
- Maximum and minimum pressure stop of movement can be offered to protect against damage caused by sudden vacuum or overpressure
- Model 4504 and 6504 are lower back connection location with front flange panel mount gauges.

Dial Size

4 1/2" (115mm) or
6" (150mm)

Case & Ring

Aluminum case & ring
with black enamel

Socket Material

316-Stainless steel.
Brass or Monel K-500

Mounting

Stem or panel mount

Window Material

4 1/2" - Polycarbonate
6" - Glass

Bourdon Tube

316-Stainless steel
Brass or Monel K-500

Pointer

Anodized aluminum
with black finish

Scale

PSI, kPa, Bar, kg/cm
(single or dual scale)

Connection Size

1/2" or 1/4" NPT stand.
(JIS and BSP avail.)

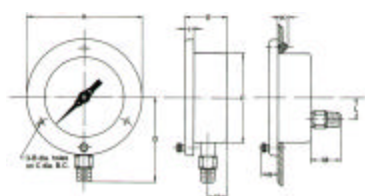
Accuracy

Grade 2A to ASME B40.1
(full scale 0.5% accuracy)

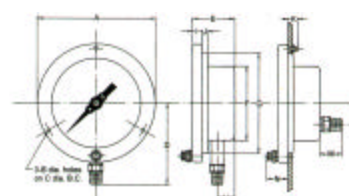
DIMENSION

TYPE 4504, 6504

4 1/2"
Dial Size
4504



6"
Dial Size
6504



Dial Size	A	B	C	D	E	F	G	H	I	J	K	L	M	N	Gauge Wt
4 1/2" (115mm)	6.181" (157)	0.236" (6)	5.354" (135)	4.488" (114)	2.283" (58)	4.764" (121)	—	0.984" (25)	0.512" (13)	—	0.787" (20)	1.181" (30)	1.614" (41)	0.906" (23)	
6" (150mm)	7.563" (192)	1/4" - 20UNC	7.008" (178)	5.197" (132)	2.756" (70)	4.764" (121)	6.378" (162)	1.102" (28)	0.669" (17)	0.236" (6)	0.787" (20)	1.339" (34)	1.496" (38)	1.377" (35)	