

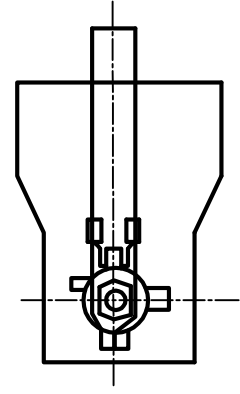
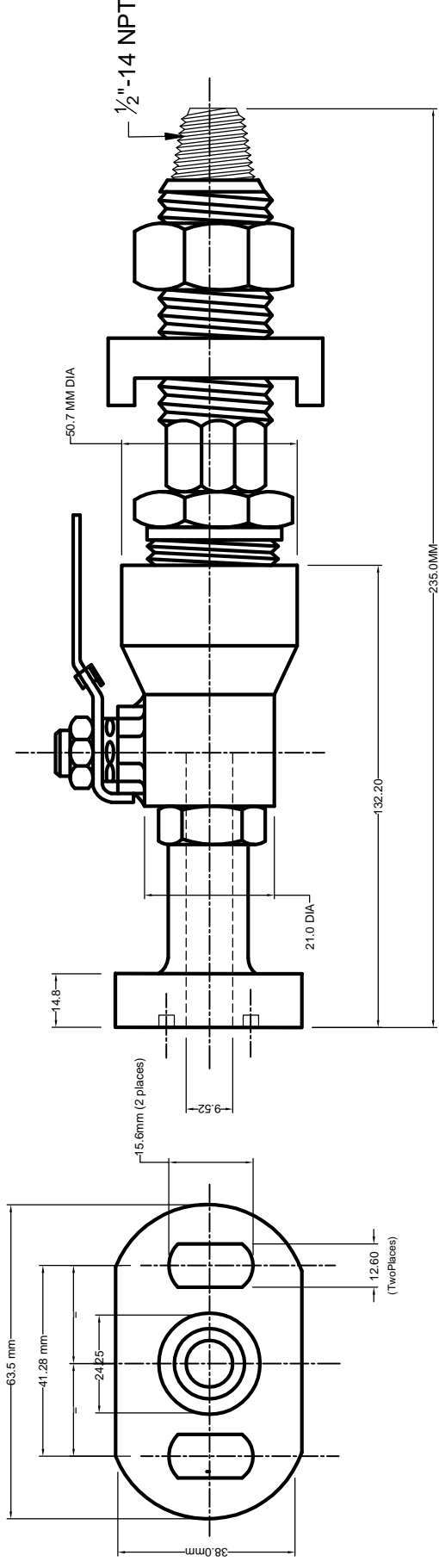


- Used for Gas Measurement Application
- Designed to provide a rigid mount for transmitters and flow computers
- 3/8" bore for unrestricted flow of process gas
- Vertical / Horizontal Mount
- Integral Ball Valve
- ¼ Turn Ball Valve for quick shut off
- Direct connection with the taps of an orifice fitting and DPT
- Flange X ½" NPT(M) Connections
- Can be installed without removing the handles
- Designed to reduce the number of leak points
- Factory assembled & tested
- Dielectric Kits available as an option
- 6000 Psi @ 200°F Rated with Delrin® Seat
- SS316 Standard, CS option available
- P/Ns : JSBVS – 316SS
JSBVC – Carbon Steel
- Drawing No. AI-SVA-001 Rev 1.00
- Part Numbering Details:



Model	-	Position	-	MOC
JSBVS		001 - Left		316SS
JSBVC		002 - Right		Carbon Steel
		003 - Left & Right		

REV.	REASON FOR ISSUE	DATE	DRN.	CHKD.	APP.
0.00	REL FOR MANU.	7/17/2014	P.S	D.K.D	G.C



ALL DIMENSIONS ARE IN INCHES

P/N :	MATERIAL
JSBVS	316SS
JSBYC	C.S

TOLERNCES (UNLESS OTHERWISE STATED)	
0.0 = ±0.25mm	
0.00 = ±0.12mm	
ANGLE = ± 1/2°	

DATE OF DRAWING	DRAWN BY	CHECKED	APPROVED	MATERIAL
7/17/2014	P.S	D.K.D	G.G.A	316SS/C.S-A105

<h1>JVF</h1>	
15060 West Drive Houston, TX 77053 USA	
TITLE	
STABILIZER VALVE ASSEMBLY	
DWG No : JSBV-001	
Rev 0.0C	

ALL DIMENSIONS ARE SUBJECT TO CHANGE WITHOUT PRIOR NOTICE, TO BE USED FOR REFERENCE ONLY.

This drawing is the property of JV F
Unauthorised reproduction is prohibited.