

<b>SIZES:</b>	1/8" to 1/4"				
<b>BODY :</b>	Forged, CS-ASTM-A 105 Plated, ASTM A 479 316 SS Angled / Straight Pattern				
<b>END CONNECTIONS:</b>	Screwed / Compression ends.				
<b>STEM:</b>	Close tolerance surface finish, cold rolled threads, ASME SA-479 Type 316 SS				
<b>NEEDLE TIP:</b>	Hardened & Ground.				
<b>GLAND BODY:</b>	SS looking pin provided, CS, ASTM A108 Plated or ASME SA-479 Type 316 SS				
<b>GLAND PACKING:</b>	PTFE				
<b>SEAT:</b>	Delrin ® Soft Seat				
<b>HANDLE:</b>	Aluminum Anodized Thumb Wheel				
<b>WASHER:</b>	ASME 479 Type 316 SS				
<b>PRESSURE/ : TEMPERATURE</b>	<table border="0" style="width: 100%;"> <tr> <td style="text-align: center;"><u>TEMPERATURE</u></td> <td style="text-align: center;"><u>PRESSURE</u></td> </tr> <tr> <td style="text-align: center;">-20 to 100° F</td> <td style="text-align: center;">6,000 psi</td> </tr> </table>	<u>TEMPERATURE</u>	<u>PRESSURE</u>	-20 to 100° F	6,000 psi
<u>TEMPERATURE</u>	<u>PRESSURE</u>				
-20 to 100° F	6,000 psi				
<b>PRESSURE RATING:</b>	Body : Hydrostatic at 6,000 Seat & Gland : 1,000 psi with Nitrogen				
<b>MINIMUM TEMP.:</b>	CS-ASTM-A-105: - 20° F / 316SS-ASTM-A-479: - 65° F				
<b>OPTIONS:</b>	<ul style="list-style-type: none"> <li>• 'T' Bar Handle</li> <li>• Material of construction confirming to NACE MR-01-75</li> </ul>				
<b>DESIGN STANDARD:</b>	<p><b>A) Pressure Piping/Vessel codes</b> ANSI B31.1 – Power Piping ANSI B31.2 – Fuel Gas Piping ANSI B31.3 – Chemical Plant petroleum refinery piping Section VIII-DIV1-Boiler &amp; Pressure vessel code</p> <p><b>B) Threads &amp; Dimensional Codes</b> ANSI B2.1 – Pipe Threads ANSI B1.1 – Straight Threads ASME – B16.10 F To F Dimension of Valve.</p> <p><b>C) Temperature-Pressure Standard</b> ASME B 31.3</p>				
<b>REF. DRAWING:</b>	JVF-MSSNV-001, JVf-MSSNV-002 JVf-MSSNV-003, JVf-MSSNV-004				



Alberta Boilers Safety Association Canada

CRN: 0C13720.2



Registered with Dun & Bradstreet

Since 1998

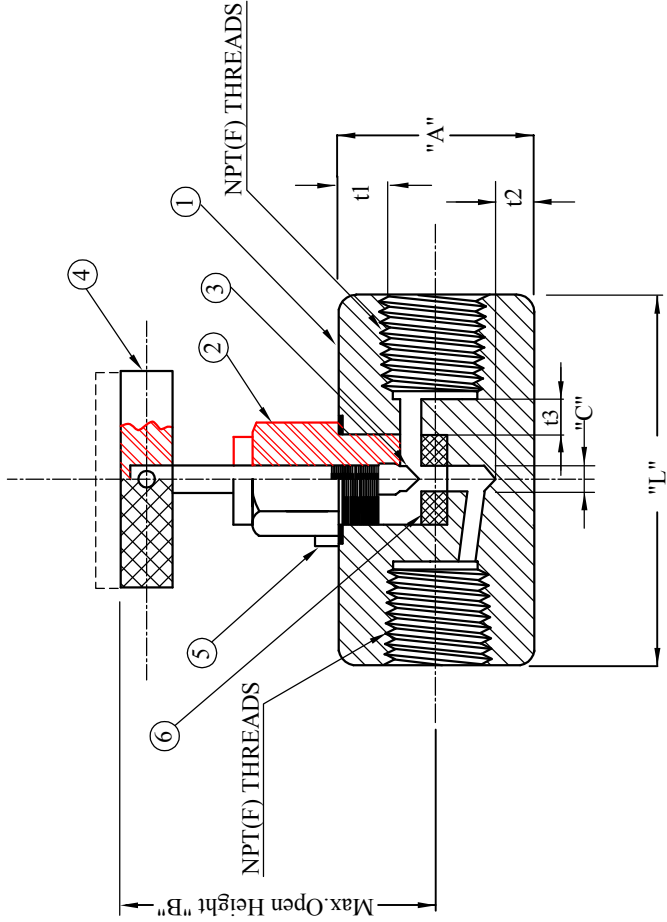
REV.	REASON FOR ISSUE	DATE	DRN.	CHKD.
0.00	REL. FOR MANU.	28.01.10	A.K.S	D.K.D.

ITEM NO.	DESCRIPTION	QTY.	MATERIAL
1	BODY	1	C.S-ASTM A105/ SS316-ASTM A479
2	GLAND BODY	1	C.S-ASTM A105/ SS316-ASTM A479
3	SPINDLE	1	SS316-ASTM A479
4(a)	HANDLE C.S VALVE	1	C.S-ASTM A105
4(b)	HANDLE 316SS VALVE	1	ALUMINIUM
5	LOCK PIN	1	STAINLESS STEEL
6	SOFT SEAT	1	DELTRIN

PRESSURE RATING	6000 PSI
TEMPERATURE RATING	200°F

\*Note:- Material Grade  
 C.S :- ASTM A105  
 FINISH ZN PLATED  
 SS316 :- ASTM A479

NOTE:- BREAK ALL SHARP EDGES & REMOVE BURR



PART NO.	SIZE NPT.	ENDS.	MATERIAL.	A	B	C	L	t1	t2	t3
JVF 0612	1/4"X 1/4"	F X F	C.S-ASTM A105	19.0mm sq	48.0mm	3.2mm	48.0mm	3.7mm	2.64mm	2.65mm
JVF 0412	1/4"X 1/4"	F X F	SS316-ASTM A479	19.0mm sq	48.0mm	3.2mm	48.0mm	3.7mm	2.64mm	2.65mm
REV.	DATE OF DRAWING	DRAWN BY		CHECKED	APPROVED					
0.00	28/1/2010	P.S		D.K.D	G.G.A					

**PROJECT/CLIENT**  
**JVF**  
**TITLE**  
**MINIATURE SOFT SEAT NEEDLE VALVE**

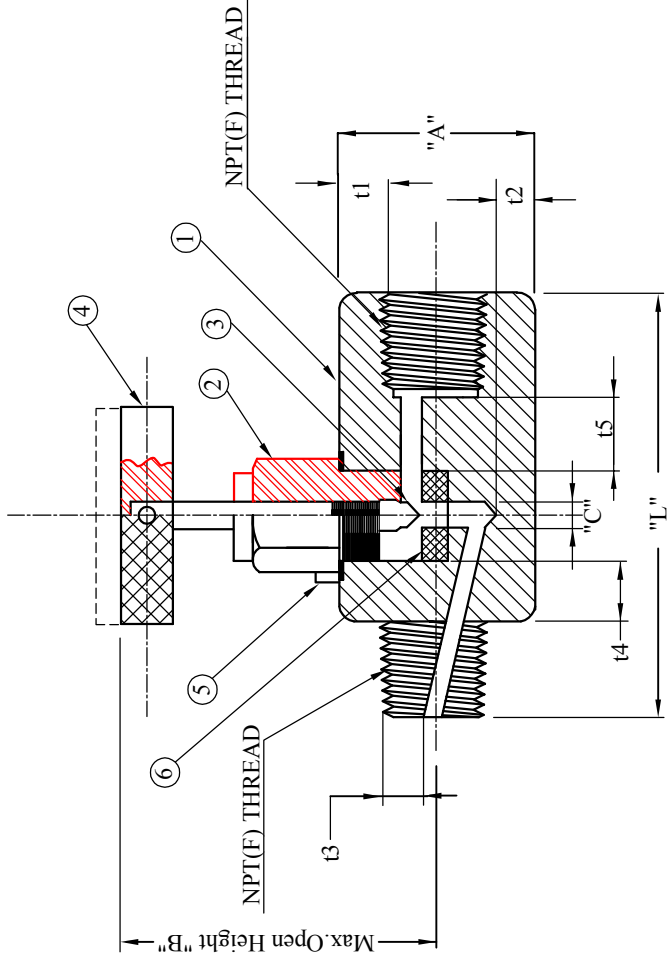
**JVF**

15060 West Drive  
 Houston, TX77053  
 USA

This drawing is the property of JVf. Unauthorised reproduction is prohibited.  
 DRG NO :-JVf-MSSNV-001  
 REV. 0.00

ALL DIMENSIONS ARE SUBJECT TO CHANGE WITOUT ANY PRIOR NOTICE. TO BE USED FOR REFERENCE ONLY.

REV.	REASON FOR ISSUE	DATE	DRN.	CHKD.
0.00	REL.FOR MANU.	28.01.10	A.K.S	D.K.D.



ITEM NO.	DESCRIPTION	QTY.	MATERIAL
1	BODY	1	C.S-ASTM A105/ SS316-ASTM A479
2	GLAND BODY	1	C.S-ASTM A105/ SS316-ASTM A479
3	SPINDLE	1	SS316-ASTM A479
4(a)	HANDLE C.S VALVE	1	C.S-ASTM A105
4(b)	HANDLE 316SS VALVE	1	ALUMINIUM
5	LOCK PIN	1	STAINLESS STEEL
6	SOFT SEAT	1	DELFIN

\*Note:- Material Grade

C.S :- ASTM A105  
FINISH ZN PLATED  
SS316 :- ASTM A479

PRESSURE RATING	6000 PSI
TEMPERATURE RATING	200°F

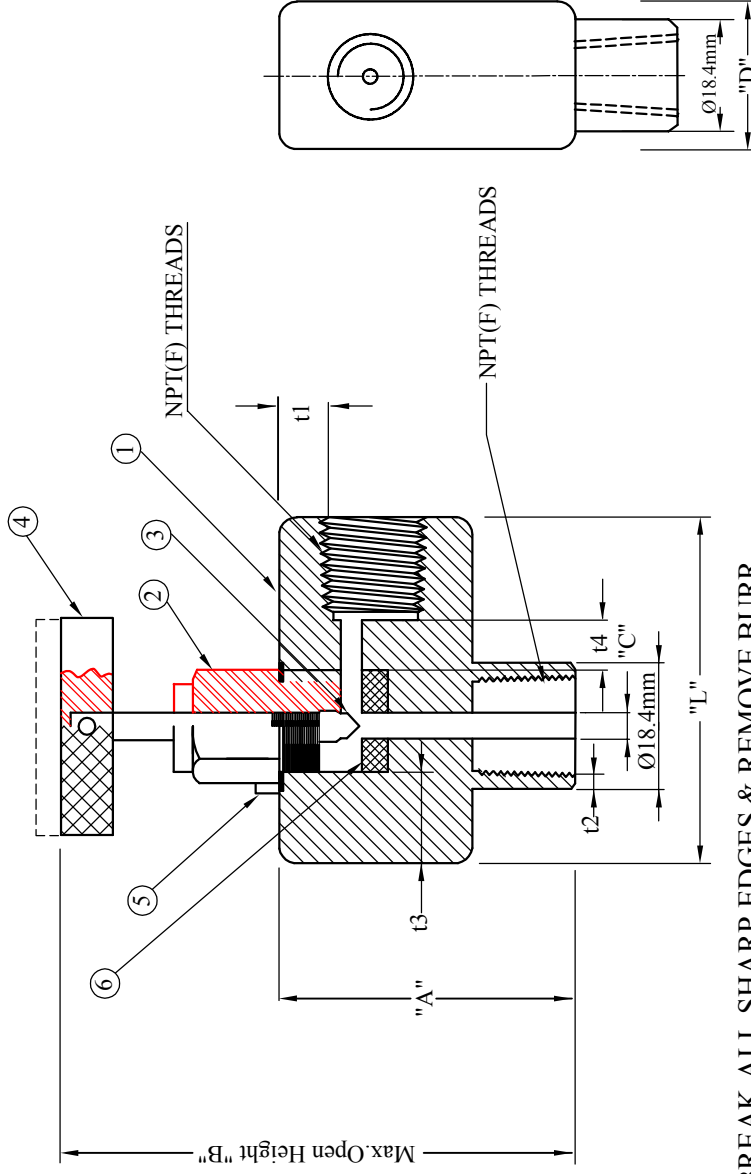
PART NO.	SIZE NPT.	ENDS.	MATERIAL.	A	B	C	L	t1	t2	t3	t4	t5
JVF 0632	1/4"X 1/4"	M X F	C.S ASTM A105	19.0mm sq	48.0mm	3.2mm	48.0mm	2.64mm	3.7mm	5.03mm	4.8mm	1.3mm
JVF 0432	1/4"X 1/4"	M X F	SS316 ASTM A479	19.0mm sq	48.0mm	3.2mm	48.0mm	2.64mm	3.7mm	5.03mm	4.8mm	1.3mm

NOTE:- BREAK ALL SHARP EDGES & REMOVE BURR

<b>PROJECT/CLIENT</b>	<b>JVF</b>
<b>TITLE</b>	<b>MINIATURE SOFT SEAT NEEDLE VALVE M X F</b>
<b>JVF</b>	
15060 West Drive Houston, TX77053 USA	
This drawing is the property of JV.F. Unauthorised reproduction is prohibited.	DRG NO :-JV.F-MSSNV-002
REV. 0.00	

REV	DATE OF DRAWING	DRAWN BY	CHECKED	APPROVED
0.00	11/3/2014	P.S	D.K.D	G.G.A

ALL DIMENSIONS ARE SUBJECT TO CHANGE WITHOUT PRIOR NOTICE, TO BE USED FOR REFERENCE ONLY.



ITEM NO.	DESCRIPTION	QTY.	MATERIAL
1	BODY	1	C.S-ASTM A105/ SS316-ASTM A479
2	GLAND BODY	1	C.S-ASTM A105/ SS316-ASTM A479
3	SPINDLE	1	SS316-ASTM A479
4(a)	HANDLE C.S VALVE	1	C.S-ASTM A105
4(b)	HANDLE 316SS VALVE	1	ALUMINIUM
5	LOCK PIN	1	STAINLESS STEEL
6	SOFT SEAT	1	DELTRIN

\*Note:- Material Grade

C.S :- ASTM A105

FINISH ZN PLATED

SS316 :- ASTM A479

PART NO.	SIZE NPT.	ENDS.	MATERIAL.	A	B	C	L	D	t1	t2	t3	t4
JVF0652	1/4"X 1/4"	F X F	C.S ASTM A105	38.0mm	72.0mm	3.2mm	38.0mm	19.0mm	4.14mm	2.34mm	4.7mm	5.7mm
JVF0452	1/4"X 1/4"	F X F	SS316 ASTM 479	38.0mm	72.0mm	3.2mm	38.0mm	19.0mm	4.14mm	2.34mm	4.7mm	5.7mm

PRESSURE RATING	6000 PSI
TEMPERATURE RATING	200°F

PROJECT/CLIENT

JVF

TITLE

MINIATURE SOFT SEAT  
ANGLE NEEDLE VALVE

APPROVED

CHECKED

DRAWN BY

DATE OF DRAWING

G.G.A

D.K.D

P.S

23/12/2016

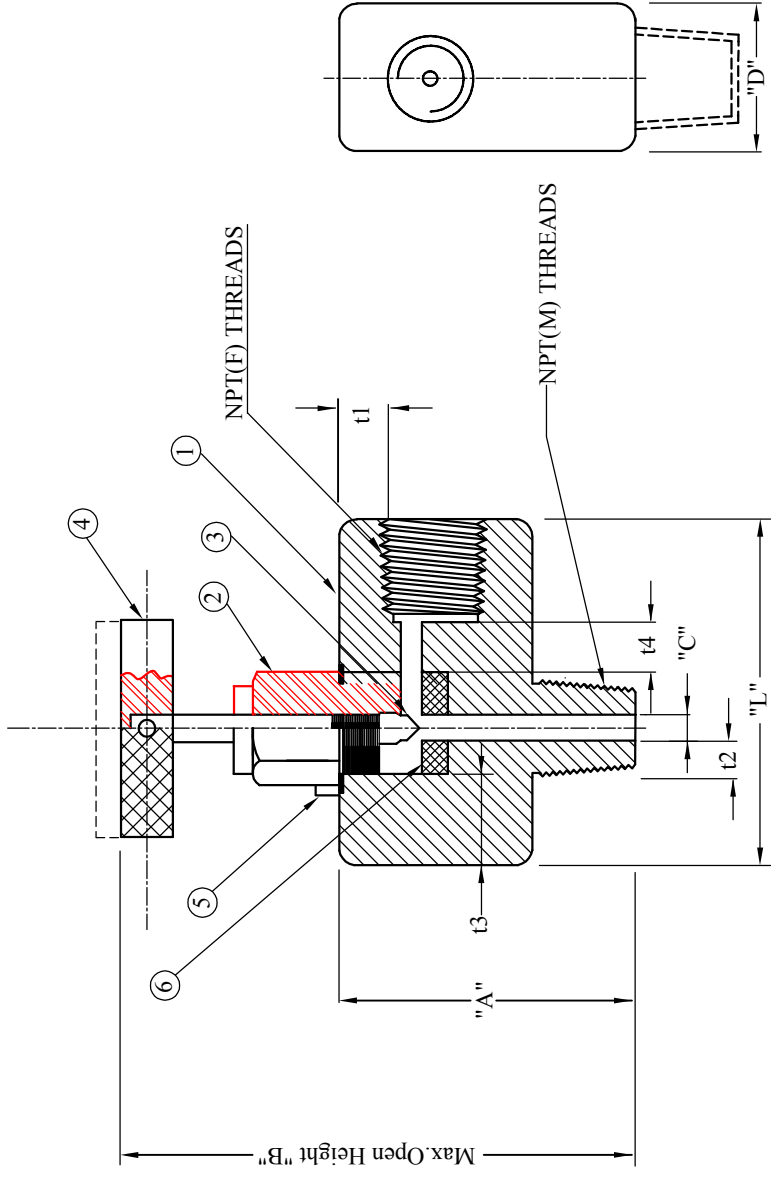
ALL DIMENSIONS ARE SUBJECT TO CHANGE WITHOUT PRIOR NOTICE, TO BE USED FOR REFERENCE ONLY.

JVF

15060 West Drive  
Houston, TX77053  
USA

DRG NO :-JVF-MSSNV-003

REV.	REASON FOR ISSUE	DATE	DRN.	CHKD.
0.00	REL.FOR MANU.	28.01.10	P.S	D.K.D.



**NOTE:- BREAK ALL SHARP EDGES & REMOVE BURR**

PART NO.	SIZE NPT.	ENDS.	MATERIAL.	A	B	C	L	D	t1	t2	t3	t4
JVF 0672	1/4"X 1/4"	M X F	C.S ASTM A105	38.0mm	72.0mm	3.2mm	38.0mm	19.0mm	4.12mm	5.03mm	4.70mm	5.7mm
JVF 0472	1/4"X 1/4"	M X F	SS316 ASTM 479	38.0mm	72.0mm	3.2mm	38.0mm	19.0mm	4.12mm	5.03mm	4.70mm	5.7mm

PRESSURE RATING	6000 PSI
TEMPERATURE RATING	200°F

ITEM NO.	DESCRIPTION	QTY.	MATERIAL
1	BODY	1	C.S-ASTM A105/ SS316-ASTM A479
2	GLAND BODY	1	C.S-ASTM A105/ SS316-ASTM A479
3	SPINDLE	1	SS316-ASTM A479
4(a)	HANDLE C.S VALVE	1	C.S-ASTM A105
4(b)	HANDLE 316SS VALVE	1	ALUMINIUM
5	LOCK PIN	1	STAINLESS STEEL
6	SOFT SEAT	1	DELTRIN

\*Note:- Material Grade

C.S :- ASTM A105

FINISH ZN PLATED

SS316 :- ASTM A479

<b>PROJECT/CLIENT</b>		<h1>JVF</h1>		
JVF		15060 West Drive Houston, TX 77053 USA		
<b>TITLE</b>		<b>MINIATURE SOFT SEAT NEEDLE VALVE</b>		
REV	DATE OF DRAWING	DRAWN BY	CHECKED	APPROVED
0.00	11/3/2014	P.S	D.K.D	G.G.A
ALL DIMENSIONS ARE SUBJECT TO CHANGE WITHOUT PRIOR NOTICE, TO BE USED FOR REFERENCE ONLY.				
DRG NO :-JVF-MSSNV-004			REV	0.00