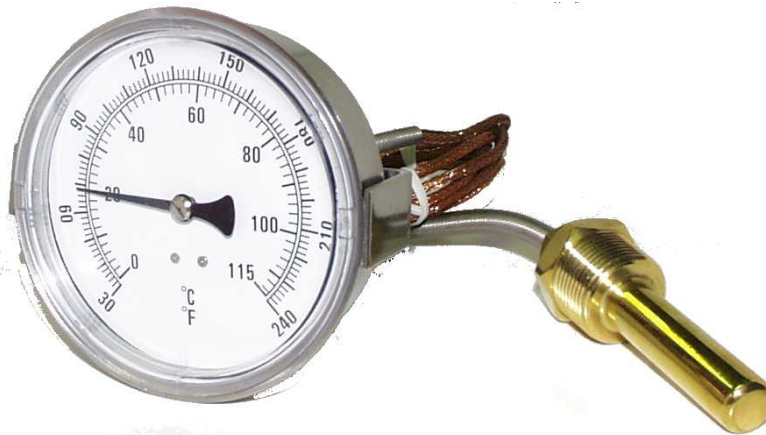


REMOTE DIAL THERMOMETERS

Offered in 2 1/2", 3 1/2" and 4 1/2" dial sizes, these thermometers are furnished in four stainless steel case configurations for direct, surface or panel mounting. The following coding chart illustrates a wide variety of bulb styles, capillaries and process connection fittings. The versatility of configurations makes these thermometers well suited to a wide range of applications including hot and chilled water pipeline systems, tanks and air ducts.





'G45' GAS ACTUATED THERMOMETERS

Precision Instrument Company gas actuated thermometers combine mechanical instrument technology with reliable gas filled capillary tube and bulb assembly. The thermometer transmits temperature readings via expansion of the inert Gas used inside the bulb through the capillary and displaying the temperature on a dial type indicator. The result is a remote reading thermometer that requires no external power allowing temperature indication where it is convenient for the user.

SPECIFICATIONS

ACCURACY ±1% of range span.

DIAL - white coated aluminum with black markings.

POINTER - slotted adjustable type permits "zero set" calibration.

CAPILLARY - standard with stainless steel spiral interlock armor

BULB - 6"Stainless Steel with ½"NPT Bushing

SCALE - Linear dial arc (Due to Gas filled System)



Part Number System:

G 45 L - 15 SS - II

Dial Size/Type

G45 = Gas Actuated
4 1/2" Dial Size
G60 = Gas Actuated
6" Dial Size

Case/Connection

L = Bottom Conn, Back Flange (std)
R = Back Conn, Back Flange
P = Panel Mount, Front Flange
U = Panel Mount, U-Clamp

Capillary

SS = SS Armored (std)
SM = Smooth SS (No Armor)

Capillary Length

05 = 5 Foot
10 = 10 Foot
15 = 15 Foot
20 = 20 Foot

Temp Range

BB = -40/160°F&C
EE = 0/150°F&C
GG = 0/200°F&C
II = 0/250°F&C
KK = 30/240°F&C
MM = 0/300°F&C
PP = 50/400°F&C
RR = 50/550°F&C
SS = 50/750°F&C
TT = 200/1000°F&C