

PRECISION INSTRUMENT COMPANY

Series 'DS-M45' Threaded Off-Line Mini-seal

Diaphragm Seals are designed for use in applications where chemical compatibility, trash or sludge in process or sanitary requirements prevent the use of a standard pressure gauge or gauge only installation.

Diaphragm Seals consist mainly of an upper housing, lower housing and a separating diaphragm. These components can be selected and made of different type materials for better compatibility with the end process.

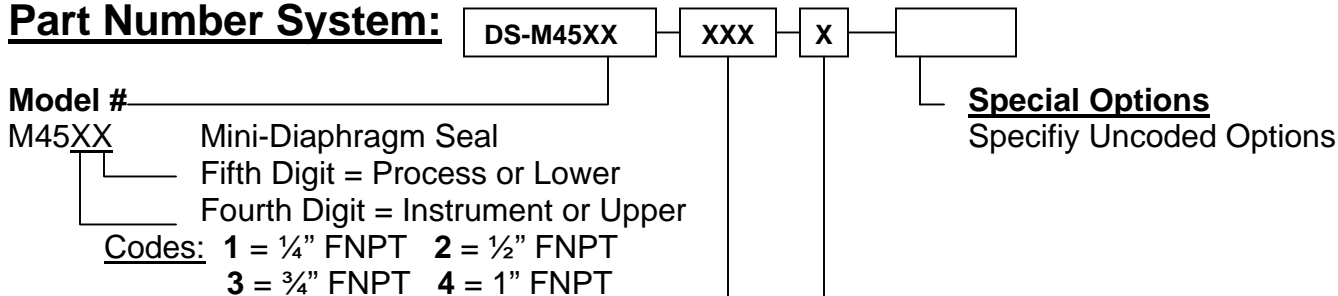
Diaphragm seal assemblies can be made and selected with different types of Pressure instruments, instrument connections, process connections or types of seals. It is important to know as much about the application as possible so that the correct specifications are used when selecting the diaphragm seal assembly.



NOTES:

1. The Series 'DS-M45' are designed for gauges 1.5" to 6" in size also acceptable for pressure transducer/transmitters or other small displacement instruments.
2. Standard Material of Construction: All 316 Stainless Steel (Others Available)
3. Standard Pressure Rating is 2500 PSI - Optional 5000 PSI rating available.
4. Specify thread sizes and types for instrument and process connection.
5. Specify types of materials for upper and lower housings and diaphragm.
6. Available with or without Flushing Connection.
7. Male threaded bottom connection available.

Part Number System:



Material of Construction

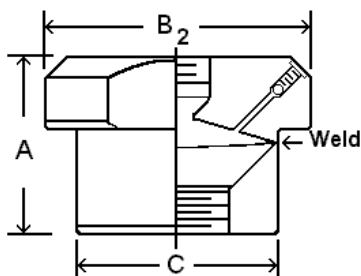
316 = 316 Stainless Steel
 HTC = Hastelloy 'C'

MON = Monel
 TAN = Tantalum

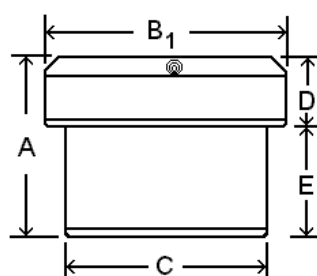
Flushing Connection

0 = No Flushing Connection
 F = with Flushing Connection

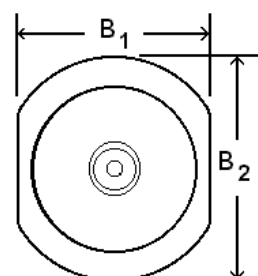
Dim	Inches	mm
A	1.5"	38
B1	2.25"	57
B2	2.49"	63
C	1.89"	48
D	.64"	16
E	.86"	22



SIDE VIEW



FRONT VIEW



TOP VIEW