

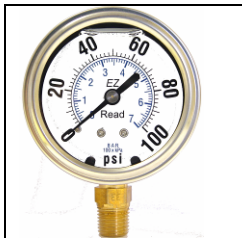
Our 'SE-200LFW-EZ' series gauge line is a quality line of liquid filled gauges. The 'EZ-read' dial allows accurate and easy readings from a convenient distance. This is also beneficial for safety if there is a chance that the gauge may be over-pressured – keeping inspectors out of harms way.

The glycerine filling helps dampen the effects of pulsation and vibration, while also perpetually lubricating the movement (and keeping contaminants such as dirt away from all moving parts) which will extend the life of the gauge.

This gauge has been specifically designed with original equipment manufacturers in mind. It is typically used on hydraulic & pneumatic systems as well as any commercial or industrial application not corrosive to brass and bronze wetted parts where glycerine filling is suitable for use.

## SPECIFICATIONS:

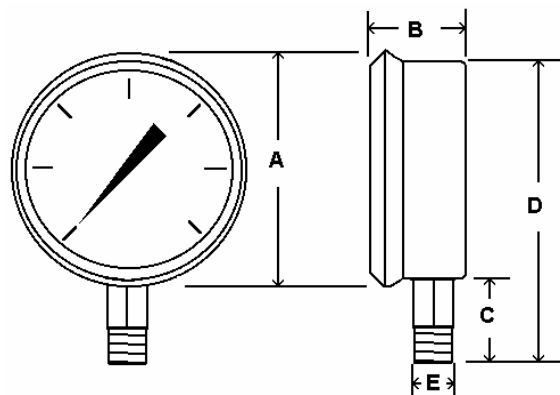
- Available Dial Sizes: 2 1/2"
- Available Connection Sizes: 1/4"NPT
- Stainless Steel Case And Bezel
- Brass Internals & Connection
- Phosphour Bronze Bourdon Tube
- Liquid Filled
- Accuracy : Standard = 3-2-3 % Per ANSI grade B
- Dual Scale: PSI & Bar (x100=kPa)
- Ambient temperature: 30°F to 160°F



*Notice how the 'EZ-READ' Dial allows clear, accurate and easy readings from a convenient distance. This is also beneficial for safety if there is a chance that the gauge may be over-pressured, keeping inspectors out of harms way.*



|          |    |      |     |
|----------|----|------|-----|
| 30/0"VAC | A  | 5    | 0.5 |
| 30/0/15  | CB | 5    | 0.5 |
| 30/0/30  | CC | 10   | 1   |
| 30/0/60  | CD | 10   | 1   |
| 30/0/100 | CE | 20   | 2   |
| 30/0/150 | CF | 20   | 2   |
| 30/0/300 | CH | 50   | 10  |
| 0/15     | B  | 2    | 0.2 |
| 0/30     | C  | 5    | 0.5 |
| 0/60     | D  | 10   | 1   |
| 0/100    | E  | 20   | 2   |
| 0/160    | F  | 20   | 2   |
| 0/200    | G  | 40   | 5   |
| 0/300    | H  | 50   | 5   |
| 0/400    | I  | 50   | 5   |
| 0/600    | K  | 100  | 10  |
| 0/1000   | M  | 200  | 20  |
| 0/1500   | N  | 200  | 20  |
| 0/2000   | O  | 400  | 50  |
| 0/3000   | P  | 500  | 50  |
| 0/5000   | R  | 1000 | 100 |
| 0/10,000 | U  | 1000 | 100 |
| 0/15,000 | V  | 2000 | 200 |



|                |    | A    | B    | C    | D    | E    |
|----------------|----|------|------|------|------|------|
| 2 1/2"<br>Dial | In | 2.80 | 1.28 | 1.07 | 3.55 | 1/4" |
|                | MM | 71   | 33   | 27   | 90   | Npt  |

\*Dimensions subject to change